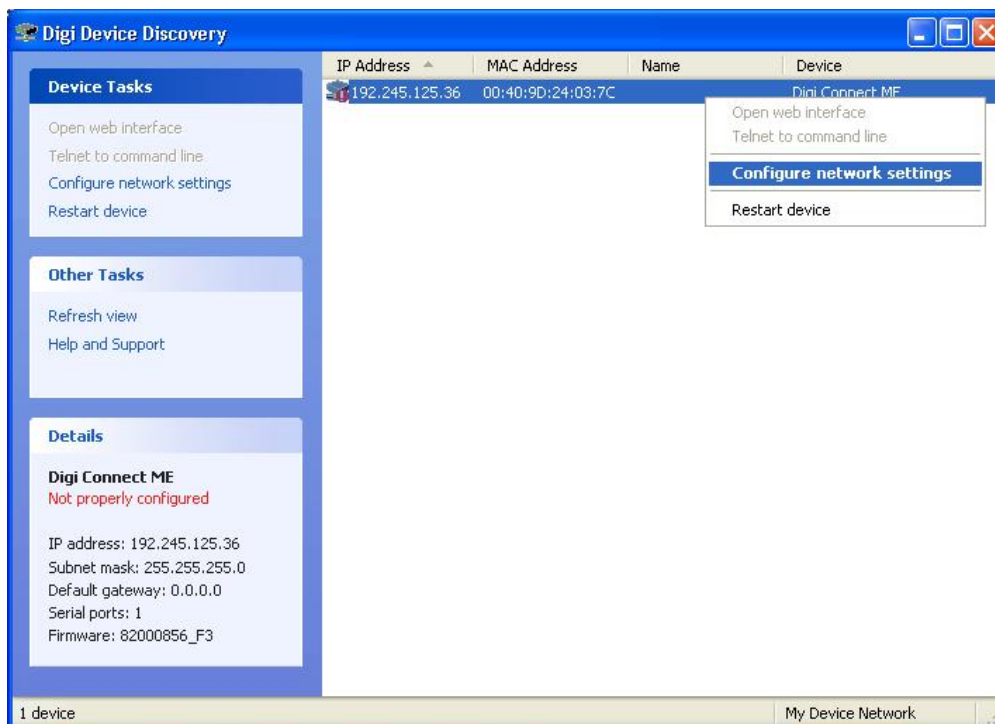
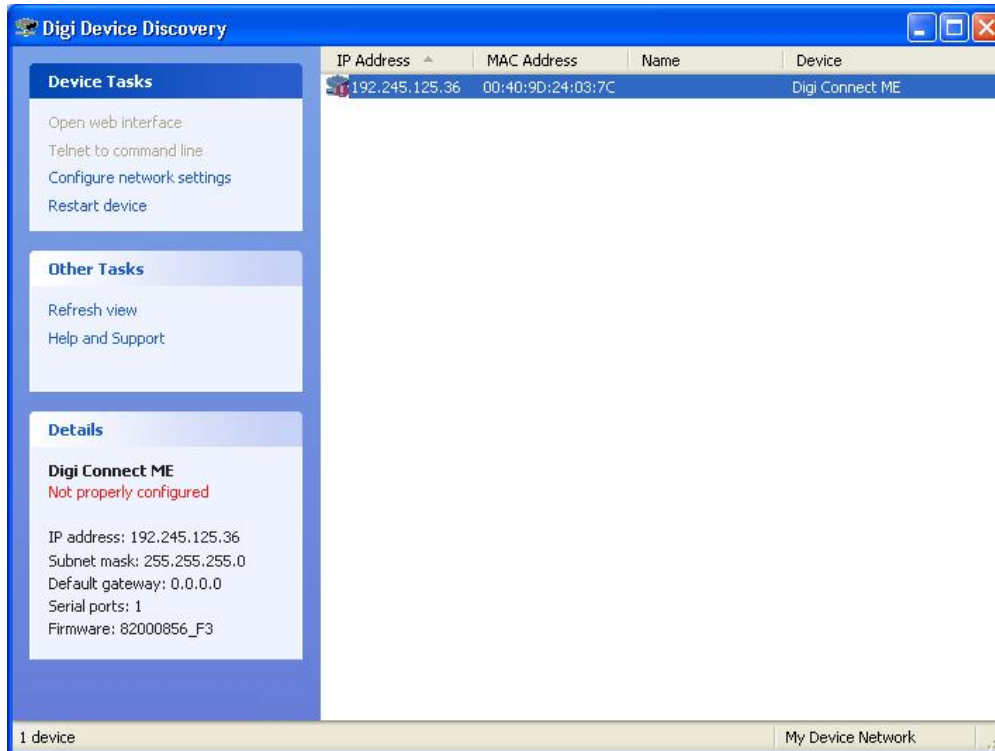


2. DEVICE DISCOVERY UTILITY CONFIGURATION

Before running Device Discovery Utility for the NM-541 installer must first check that:

- NM-541 is powered up correctly
- Ethernet cables are connected
- Device Discovery Utility has been set up properly

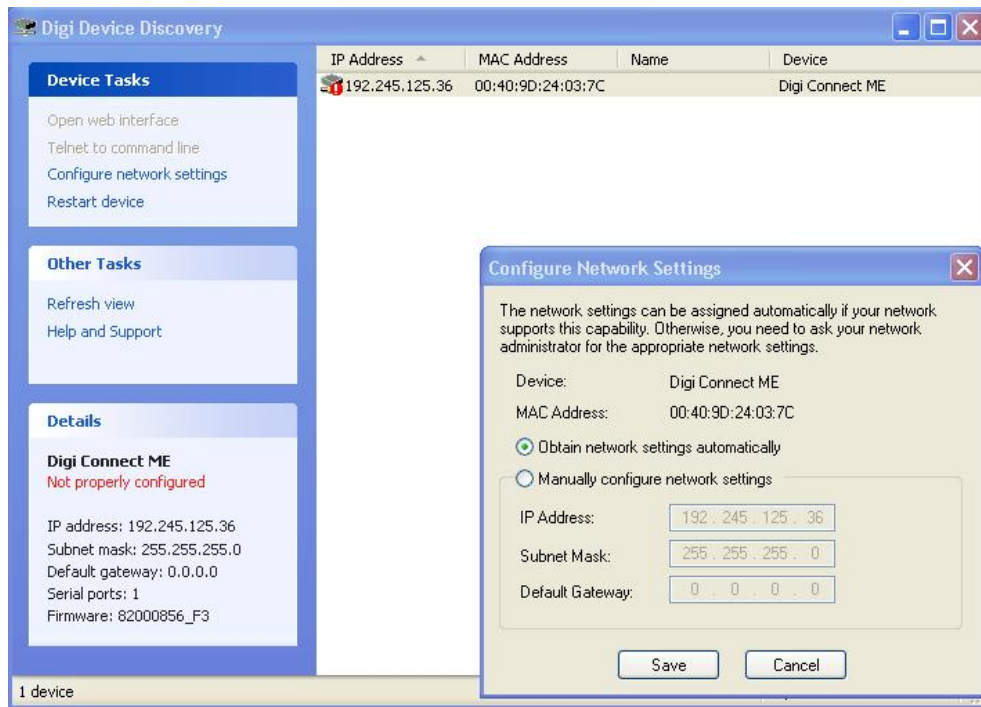
After running utility (located under Start>All Programs>Digi>Digi Device Discovery) a not properly configured message could appear. This means that IP address has not properly been assigned and needs reconfigure.



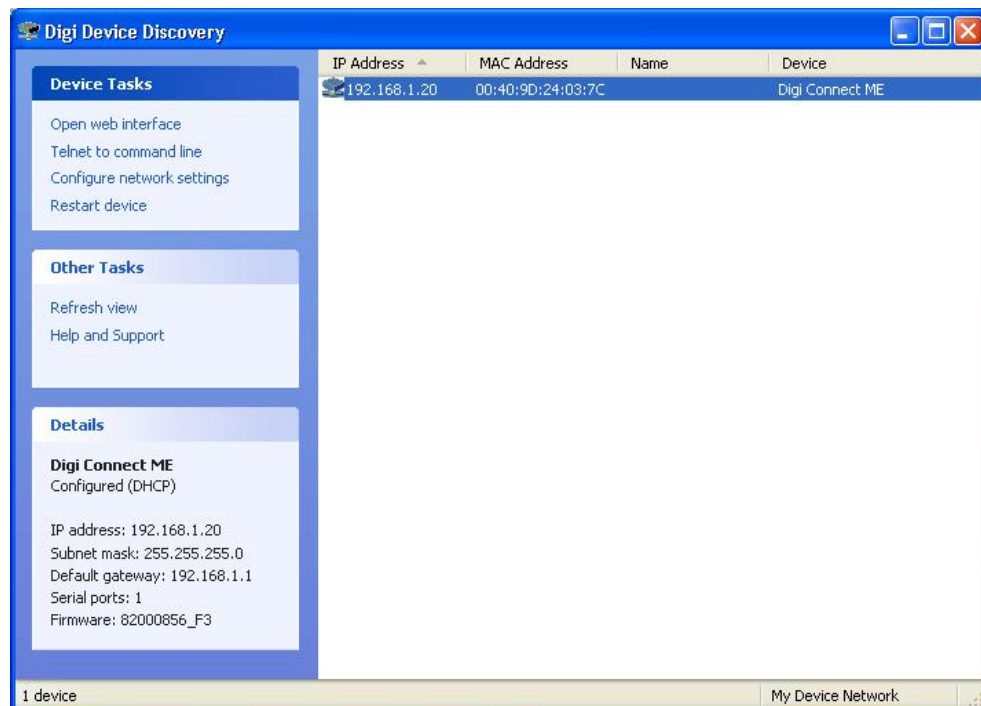
Configuration of the network settings can be done within the Device Discovery Utility either by letting the network switch assign IP address for every NM-541, or manual. Right click on highlighted IP address of every device to get the drop down menu and select Configure network settings as shown in figure above

2.1 Automatic IP configuration (DHCP)

Obtaining Network settings automatically via DHCP function of Ethernet switch can be done by checking Obtain network settings automatically radio button and then Save.

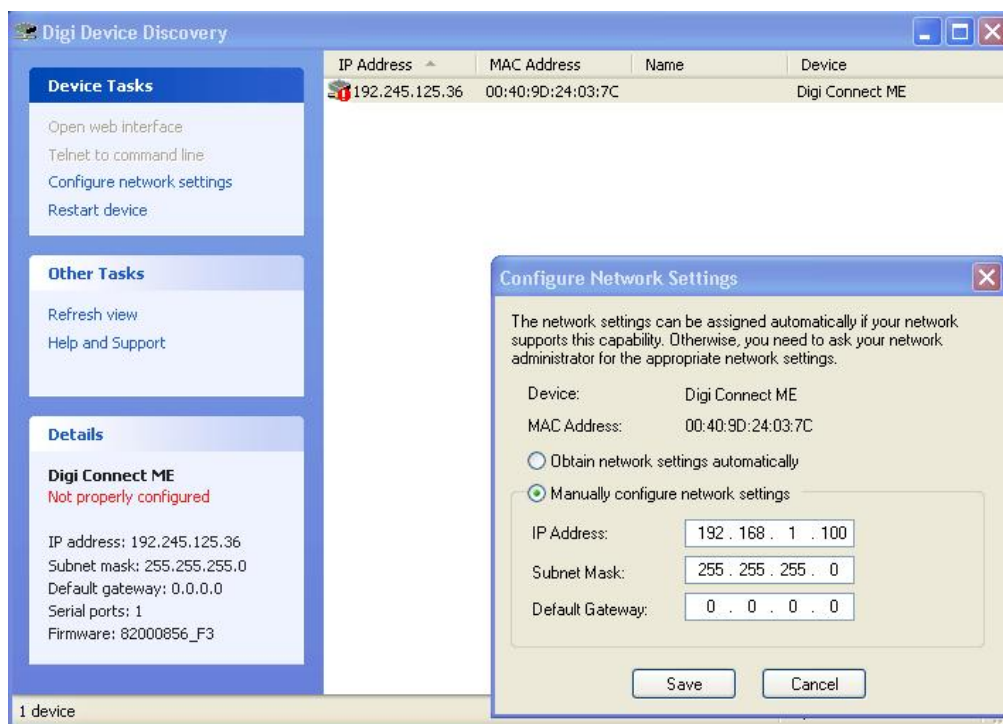


NM-541 will then restart and after a minute it will appear again with no warnings in the window. In the bottom left corner the new IP details appear indicating that it is automatically configured (DHCP). If no new settings appear in window after a minute user should click on the refresh button to research for NM-541 devices over local network.



2.2 Manual IP configuration (Static IP)

Configuring Network settings manually (recommended) can be done by checking Manually configure network settings radio button. Select for every NM-541 a different address in IP address field matching the 192.168.0.X or 192.168.1.X local network standard and leave subnet mask the same (255.255.255.0) for every device. Click Save to continue.



NM-541 will then restart and after a minute it will appear again with no warnings in the window. In the bottom left corner the new IP details appear indicating that NM-541 it is manually configured (Static IP). If no new settings appear in window after a minute user should click on the refresh button to research for NM-541 devices over local network

