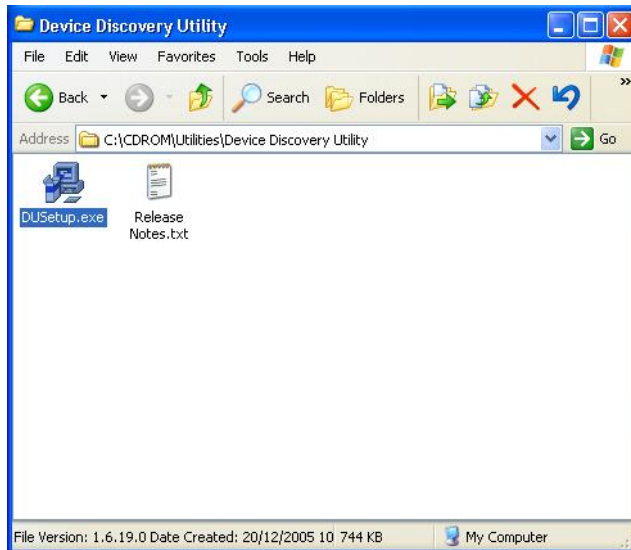


TECHNICAL APENDIX B

DEVICE DISCOVERY UTILITY

1. INSTALLING THE DEVICE DISCOVERY UTILITY

The following procedure shows how to install Device discovery utility which is useful for tracking and managing NM-541 devices connected to a local network. When installing discovery utility NM-541 does not have to be connected or powered on.



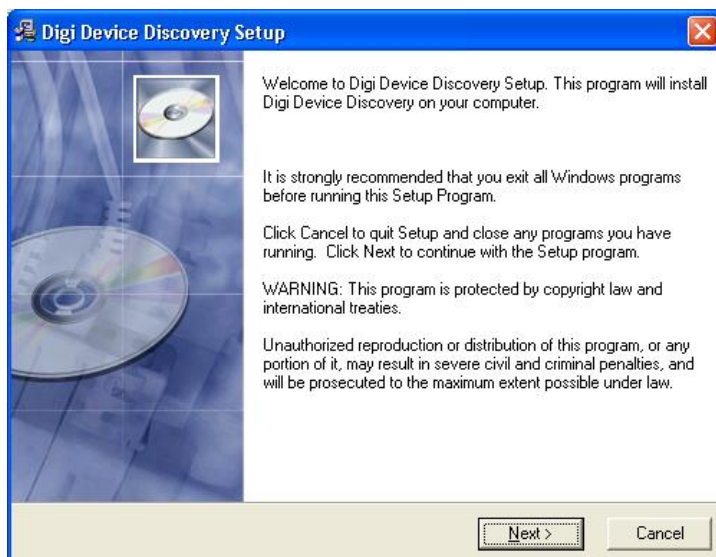
STEP 1:

Open windows explorer and find Device Discovery Utility in supplied CD-ROM. Double click on DUSetup.exe to begin installation



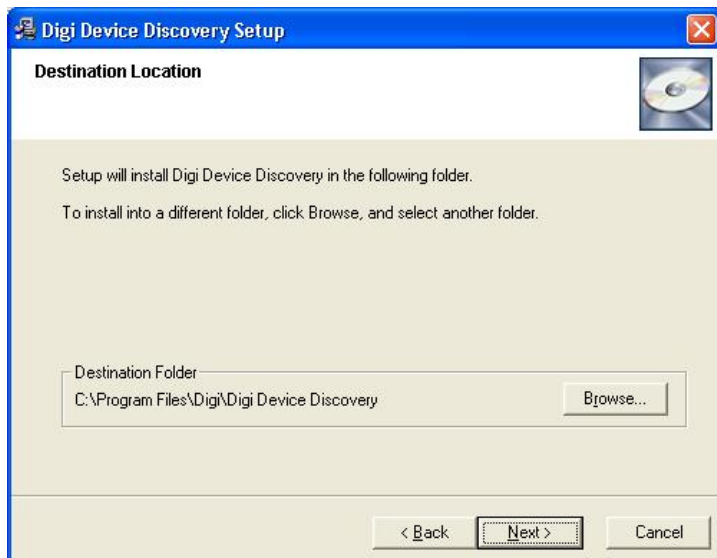
STEP 2:

Windows could then give a warning that user is about to run the selected file. Click Run to continue



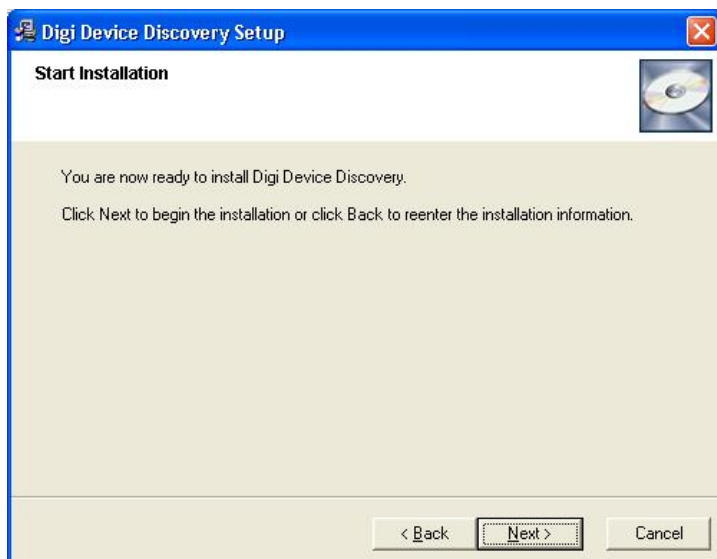
STEP 3:

Click Next to continue



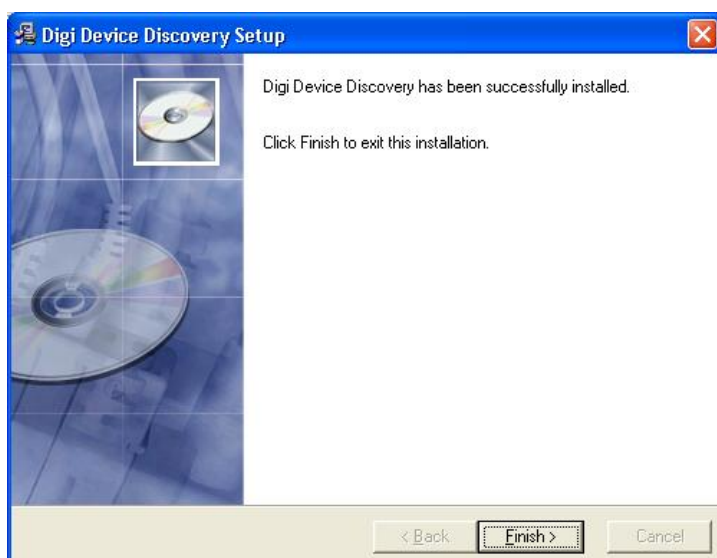
STEP 4:

Select destination folder for the Utility to be set up (default folder recommended) and click Next



STEP 5:

Copying of the needed files is ready to begin. Click Next to continue



STEP 6:

After completion of installation a success notice is supplied. Click Finish to exit.